

for the "Voices of Praise", Cebu, the Philippines

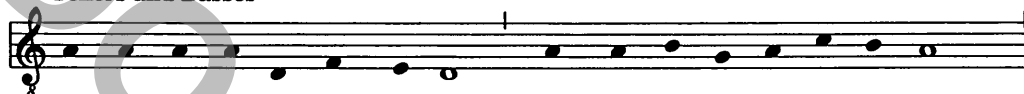
# Jesu, dulcis memoria

SATB a cappella

early CXIII English (?) hymn  
tr. Edward Caswall, 1844  
paraphrased, rgd.

Plainsong Hymn mode 1  
Randall Giles

Tenors and Basses



Je - su dul - cis me - mo - ri - a      Dans ve - ra cor - dis gau - di - a,  
Je - sus, the ve - ry thought of Thee      With sweet - ness fills the joy - ful breast,



Sed su - per mel et om - ni - a,      e - jus dul - cis prae - sen - ti - a.  
But sweet - er than the ho - ney comb      Thy face to see, in Thee to rest.

5 *p* *mp sub.p* *p*

S  
A

Nil ca - ni - tur su - a - vi - mus,      Nil au - di -  
No voice can sing, - no heart can frame,      Nor can the

T  
B

Musical notation for Soprano and Alto, first system. The Soprano part is in G-clef and the Alto part is in C-clef. The Soprano part has a melodic line with notes G4, A4, B4, C5, B4, A4, G4, F4, E4, D4, C4. The Alto part has a harmonic accompaniment with notes G4, A4, B4, C5, B4, A4, G4, F4, E4, D4, C4.

9 *mp* *mp*

- tur ju - cun - di - us,      Nil co - gi - ta - tur dul - ci -  
me - mo - ry re - call      A sweet - er sound than Je - sus' -

sub. *p*

Musical notation for Soprano and Alto, second system. The Soprano part is in G-clef and the Alto part is in C-clef. The Soprano part has a melodic line with notes G4, A4, B4, C5, B4, A4, G4, F4, E4, D4, C4. The Alto part has a harmonic accompaniment with notes G4, A4, B4, C5, B4, A4, G4, F4, E4, D4, C4.

Copyright © 2002 by Paraclete Press, Orleans, MA 02653.  
All rights reserved.



29 *p*

- re, \_\_\_\_\_ Quid - sit Je - sum - di - li - ge - re.  
 is, \_\_\_\_\_ None - but the - ones - who - love Him - know.

33 All

Sis Je - sum no - strum gau - di - um Qui est fu - tu - rus præ - mi - um,  
 Je - sus, our on - ly joy be Thou, As sure - ly Thou our prize wilt be;

Sit no - stra in te glo - ri - a \_\_\_\_\_ per cunc - ta sem - per sæ - cu - la.  
 In Thee be all our glo - ry now, \_\_\_\_\_ And ev - er through e - ter - ni - ty.

37 *mf* *p* **Slower**

S A - - - - - men.

A *mf* *p*

T A - - - - - men.

B A - - - - - men.

A *Slower*

For rehearsal only