

to Maxine

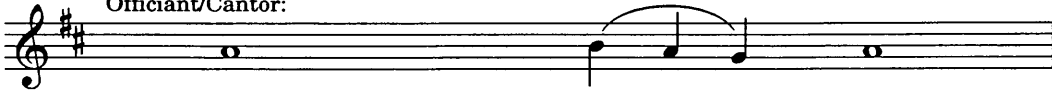
Introits for the Liturgical Year

SATB a capella

Trinity Introit

Iain Quinn

Officiant/Cantor:



Sundays & weekdays: } The earth is the Lord's for he _____ made it;
Worship the Lord in the beau - ty of holiness;
The mercy of the Lord is e - ver lasting;
Trinity Sunday: Father, Son, and Holy Spi - rit, one God;

mf

Come let us a - dore him.

Officiant/Cantor:



Glory to the Father, and to the Son, and to the Ho - ly Spirit,

mf

As it was in the be - gin - ning, is now and will be for - e - ver;

f

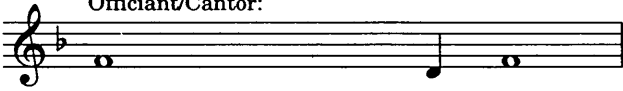
A - - - - - men.

f

Copyright © 2004 by Paraclete Press, Orleans, MA 02653.
All rights reserved.

Advent Introit

Officiant/Cantor:



Our King and Savior now draws near;

mf

A piano accompaniment system with two staves (treble and bass clef) in G major and 4/4 time. The melody is in the treble clef, starting with a half note G4, followed by quarter notes A4, B4, and C5, then a half note D5. The bass line consists of a steady eighth-note accompaniment. The system ends with a double bar line and a repeat sign. The lyrics "Come let us a - dore him." are written below the staff.

Officiant/Cantor:



Glory to the Father, and to the Son, and to the Ho - ly Spirit;

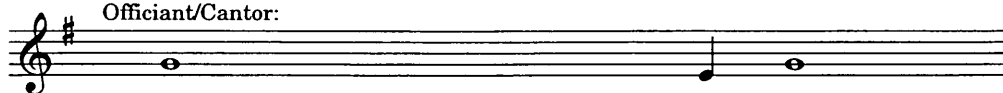
mf

A piano accompaniment system with two staves (treble and bass clef) in G major and 4/4 time. The melody is in the treble clef, starting with a half note G4, followed by quarter notes A4, B4, and C5, then a half note D5. The bass line consists of a steady eighth-note accompaniment. The system ends with a double bar line and a repeat sign. The lyrics "As it was in the be - gin - ning, is now and" are written below the staff.

A piano accompaniment system with two staves (treble and bass clef) in G major and 4/4 time. The melody is in the treble clef, starting with a half note G4, followed by quarter notes A4, B4, and C5, then a half note D5. The bass line consists of a steady eighth-note accompaniment. The system ends with a double bar line and a repeat sign. The lyrics "e - ver shall be; A - - - men." are written below the staff. There are *mf* markings above and below the system.

Christmas, Incarnation, and All Saints Introit

Officiant/Cantor:



Christmas: Alleluia. To us a child is born:
Incarnation: Alleluia. The Word was made flesh and dwelt a - mong us:
All Saints: Alleluia. The Lord is glorious in his saints:

mf

Come let us a - dore — him. Al - le - lu - ia.

mf

Officiant/Cantor:



Glory to the Father, and to the Son, and to the Ho - ly Spirit;

f

As it was in the be - gin - ing, — is ³ now — and —

f

ff

will — be for e - ver — A - - - men.

ff

Epiphany, Transfiguration, and Holy Cross Introit

Officiant/Cantor:



The Lord has shown forth his glory;

mf

Come let us a - dore him.

Officiant/Cantor:



Glory to the Father, and to the Son, and to the Ho - ly Spirit;

f

As it was in the be - gin - ing, is now and

f

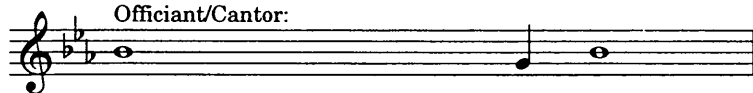
ff

will be for e - ver; A - - - men.

ff

Lenten Introit

Officiant/Cantor:



The Lord is full of compassion and mercy;

mf

Come let us a - dore him.

mf

Officiant/Cantor:



Glory to the Father, and to the Son, and to the Ho - ly Spirit:

mf

As it was in the be - gin - ning, is now and will be for -

mf

f

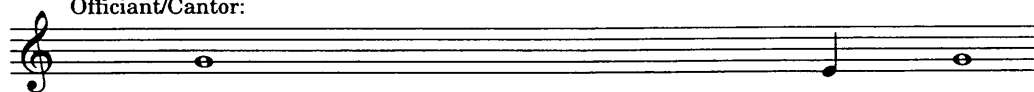
- e - ver. A - - - - men.

f

f

Easter, Ascension, and Pentecost Introit

Officiant/Cantor:



Easter: Alleluia. The Lord is risen in - deed;
 Ascension: Alleluia. Christ the Lord has ascended in - to heaven;
 Pentecost: Alleluia. The Spirit of the Lord renews the face of the earth;

f

Come let us a - dore him; Al - le - lu - ia.

f

Officiant/Cantor:



Glory to the Father, and to the Son, and to the Ho-ly Spirit:

f

As it was in the be-gin - ning is now and will

f

ff

be for e - ver, A - - - - men.

ff