

Dedicated to the glory of God in celebration of the Fiftieth Anniversary of
Ward Parkway Presbyterian Church, Kansas City, Missouri, J. Douglas Burford, Pastor

Give Thanks to the Lord

SATB and organ

I: Principals 8', 4', 2'
II: String 8', Flutes 8', 4', 2', Trumpet 8'
Ped: Principals and/or Flutes 16', 8', 4' to balance I & II

Joel Martinson

Psalms 105: 1-5, 8b-10 & 106: 4-5, 48
(Book of Common Prayer, alt.)

Moderate and steady (♩ = c. 102)

Organ

mp I
mp II
Ped.

mf

p

Copyright © 2005 by Paraclete Press, Orleans, MA 02653.
All rights reserved.

10

10

14

S
A

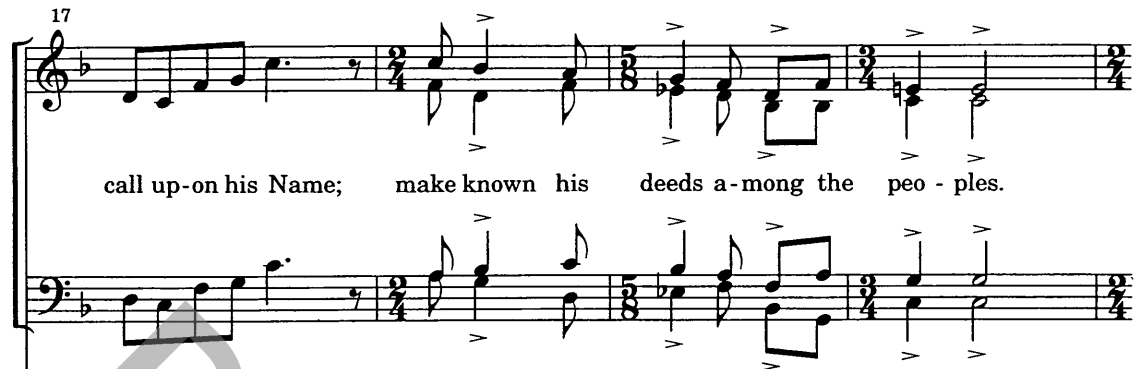
Give thanks to the Lord and

T
B

un. *mf*

14

17

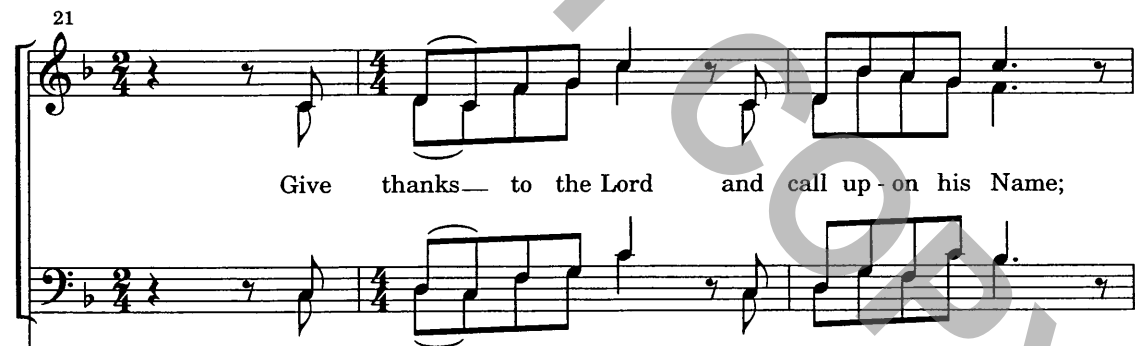


call up-on his Name; make known his deeds a-mong the peo - ples.

17



21



Give thanks— to the Lord and call up - on his Name;

21



mf II

24 *f* *mf*

Sing to him, . sing — prais - es to him, ————— and

Sing to him, ————— sing ————— prais - es to him, and

24

f *mf*

27 *cresc.* *f*

speak, ————— and speak, ————— and speak of his mar - vel - ous

27 II: - Tpt *p* *mf*

II *p* *mf*

Ped: - 4'

31

works.

31

+ II/I

I

f

+ II/Ped.

Detailed description: This system contains the vocal staves for measures 31-33. The vocal line starts with a whole note chord in measure 31, followed by rests in measures 32 and 33. The piano accompaniment begins in measure 31 with a piano introduction marked 'I' and 'f'. It features a rhythmic pattern of eighth and sixteenth notes in both hands. A watermark '모아' is visible across the piano part.

34

unis. *mp*

Glo - ry in his

34

II

p

I

Ped: - Pr. 16'

Detailed description: This system contains the vocal and piano staves for measures 34-36. The vocal line enters in measure 34 with the lyrics 'Glo - ry in his'. The piano accompaniment continues with a piano introduction marked 'II' and 'p'. The piano part features a complex rhythmic pattern with many beamed notes. A watermark '모아' is visible across the piano part.

37

ho - ly Name, glo - ry in his ho - ly

37

41 *cresc.*

Name; let the hearts of those who

cresc.

41 I I: - Pr. 4', +Fl. 4'

mp *p*

45 *mf*

seek the Lord re - joice. Search for the

45 *mf*

cresc.

49 Lord and his strength; con - tin - ual - ly seek — God's

49

53 *mf*

face. Re-mem - ber the

f *p*

57 mar-vels he has done, and the judgments of his

his won-ders and the judgments of his

(II: - String 8') *mp*

60

mouth, the promise he made for a thousand generations -

60

mf

63

- a - tions, — a thousand generations: —

f

63

(II: + String 8')

f

I

67 unis. *mp*

The cov - e - nant which he

unis. *mp*

Detailed description: This block contains the vocal staves for measures 67-69. The top staff is the treble clef and the bottom is the bass clef. Both are in B-flat major. Measure 67 is in 4/4 time, measure 68 is in 4/4 time, and measure 69 is in 3/4 time. The lyrics are 'The cov - e - nant which he'. There are triplets in measures 68 and 69. The dynamic is *mp* and the instruction is 'unis.'.

67 I: - Fl. 4', +Pr. 4' II

II

I *p*

Detailed description: This block contains the piano accompaniment staves for measures 67-69. It includes the grand staff (treble and bass clefs) and a separate bass clef staff. The music is in B-flat major. Measure 67 is in 4/4 time, measure 68 is in 4/4 time, and measure 69 is in 3/4 time. There are dynamic markings *p* and *mp*, and performance instructions 'I: - Fl. 4', +Pr. 4'' and 'II'.

70

made with A - bra - ham, the oath that he

Detailed description: This block contains the vocal staves for measures 70-72. The top staff is the treble clef and the bottom is the bass clef. Both are in B-flat major. Measure 70 is in 4/4 time, measure 71 is in 4/4 time, and measure 72 is in 3/4 time. The lyrics are 'made with A - bra - ham, the oath that he'. There are triplets in measures 71 and 72.

70

Detailed description: This block contains the piano accompaniment staves for measures 70-72. It includes the grand staff (treble and bass clefs) and a separate bass clef staff. The music is in B-flat major. Measure 70 is in 4/4 time, measure 71 is in 4/4 time, and measure 72 is in 3/4 time.

73 *mf*

swore ——— to Is - aac, es -

mf

73

76 *cresc.*

- tab - lished as a stat - ute for Ja - cob, an

cresc.

76 *mf*

mf

79 *f* *f*

ev - er - last - ing cov - 'nant for Is - rael.

79 *f*

83

83 II *mf*

Detailed description: This page of a musical score contains vocal and piano parts. The vocal line (measures 79-83) features a melody with a forte (*f*) dynamic and includes a triplet of eighth notes. The piano accompaniment (measures 79-83) consists of a right-hand part with chords and a left-hand part with a rhythmic pattern. A second piano system (measures 83-86) shows a change in dynamics to mezzo-forte (*mf*) and includes a second ending bracket labeled 'II'. The score is written in a key with one flat and a 4/4 time signature.

Quietly, in two (♩ = c. 50)

rall.

86

Re - mem - ber us, O

Quietly, in two (♩ = c. 50)

rall.

86

II: - 2' II: - 4' II: - String 8'

p *pp*

Ped: - 8'

90

Lord, with the fa - vor you have — for your peo - ple,

II: + String 8'

90

pp

95

and vis - it us — with your sav - ing help;

95

99

That we may see — the pros - per - i - ty of your e - lect

99

p

cresc.

103

and be glad, and be glad, and be

103

mp

II: + Fl 4'

mf

108

glad — with the glad - ness of your peo - ple,

mf

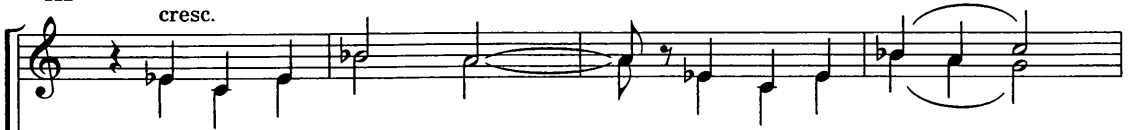
108

I: -Pr. 4', + Fl. 4'
II: + 2', Oboe 8'

I } *p*

Ped: + Pr. 16', 8'

112

cresc.

that we may glo - ry, ——— that we may glo -

unis. cresc.

that we may glo - ry, that we may glo - - -

112

*cresc.*

116

f

- ry, may glo - - - ry with your in - her - i - tance, —

f

- ry, glo - - - ry with your in - her - i - tance, —

116

(I: + Pr. 4')



120 *mp* *rall.*

in - her - i - tance. _____
in - her - i - tance. _____

I: + Pr. 4', 2', - II/I
II: - Oboe, + Tpt. 8'

120 (I: + Pr. 4') *dim.* *rall.* **Tempo I**

II *p*

Ped: + 4', - II/Ped.

124 **I**

127

131

Musical notation for measures 131-134, vocal line. The staff is in G major (one flat) and 4/4 time. Measures 131-132 are in 4/4 time, and measures 133-134 are in 3/4 time. The notes are: 131: whole rest; 132: whole rest; 133: whole rest; 134: whole rest.

131

Musical notation for measures 131-134, piano accompaniment. The piano part consists of two staves. Measure 131: Treble clef has a half note G4, bass clef has a half note G3. Measure 132: Treble clef has a half note A4, bass clef has a half note A3. Measure 133: Treble clef has a half note B4, bass clef has a half note B3. Measure 134: Treble clef has a half note C5, bass clef has a half note C4. Dynamics: *mp* in measure 132, *f* in measure 134. A large watermark 'MONOLOGY' is overlaid on the page.

135

Musical notation for measures 135-138, vocal line. The staff is in G major (one flat) and 4/4 time. Measures 135-136 are in 4/4 time, and measures 137-138 are in 3/4 time. The notes are: 135: quarter note G4, quarter note A4, quarter note B4, quarter note C5; 136: quarter note B4, quarter note A4, quarter note G4, quarter note F4; 137: quarter note E4, quarter note D4, quarter note C4; 138: quarter note B3, quarter note A3, quarter note G3. Dynamics: *f* in measure 135. The lyrics "Bless-ed be the Lord, the God of Is-ra-el," are written below the staff.

135

Musical notation for measures 135-138, piano accompaniment. The piano part consists of two staves. Measure 135: Treble clef has a half note G4, bass clef has a half note G3. Measure 136: Treble clef has a half note A4, bass clef has a half note A3. Measure 137: Treble clef has a half note B4, bass clef has a half note B3. Measure 138: Treble clef has a half note C5, bass clef has a half note C4. Dynamics: *f* in measure 135. A first ending bracket labeled "I" spans measures 137-138. A rehearsal mark "I: -2'" is placed above measure 138. A large watermark 'MONOLOGY' is overlaid on the page.

138

make known his deeds a-mong the peo - ples.

138

141

Bless-ed be the Lord the God of Is-ra-el, sing to him, sing—

sing to him,

141

II *mf* I

144

prais-es to him, — sing to him, sing — prais-es to him, —

sing — prais-es to him, sing to him, — sing — prais-es to

144

+ II/I

p

+ II/Ped.

147

— from ev - er - last - ing and to ev - er -

him, from ev - er - last - ing and to ev - er -

147

I: + 2'
(II: - Tpt., + Oboe 8')

+ I/Ped.

150

- last - ing; and let all the peo-ple say, "A - last - ing;

150

153

- men!" and let all the peo-ple say, "A - men!" Hal - le - lu -

153 II: + Mixture

mp *mf*

157

- jah! Hal - le - lu - jah! Hal - le -

157 I or II: + Flute 16'

cresc.

161

lu jah!

rall.

161

rall. FULL ORGAN (Add) ff

ff

Ped: + Reeds 16', 8'

Duration = 5' 50"
February 4, 2003
Dallas, TX