

Commissioned for the 75th General Convention of the Episcopal Church,
to commemorate the ministry of the Most Rev. Frank Tracy Griswold III
as the 25th Presiding Bishop of The Episcopal Church

Festival Eucharist

Congregation, Choir and Organ
(with optional accompaniment for organ, brass and timpani)

Kyrie

Craig Phillips

Moderato (♩ = c. 108) Warmly

Congregation

Lord, have mer - cy. Christ, have mer - cy.

Organ

mp

Pedal

5

Ch.

(choir alone) Ky - ri - e e - le - i -

mp

Cong.

Lord, _____ have mer - cy.

Manuals

p

Copyright © 2006 by Paraclete Press, Orleans, MA 02653.
All rights reserved.

9 *p* *mp*

Ch. son. Chri - ste e - le - i - son. Ky - ri -

14 optional descant *mf*

Desc. Ky - ri - e e -

Ch. - e e - le - i - son.

Cong. Lord, have mer - cy. Christ, have

19 Pedal

Desc. - le - i - son, e - - - - le - i - son.

Cong. mer - cy. Lord, have mer - cy.

Gloria in excelsis

Craig Phillips

Allegro giocoso (♩ = 110)

Congregation

Musical notation for the first system of the Congregation part, featuring a treble clef, a key signature of two sharps (F# and C#), and a 3/4 time signature. The melody consists of quarter and eighth notes.

Glo - - ry, glo -
Glo - - ria, glo -

Organ

Musical notation for the first system of the Organ part, including a grand staff with treble and bass clefs. It features a dynamic marking of *f* (forte) and a *Pedal* marking. The organ part includes chords and moving lines in both hands.

4

Pedal

Cong.

Musical notation for the second system of the Congregation part, continuing the melody from the first system.

- ry to God in the high - est.
- ria a Dios en el cie - lo.

Musical notation for the second system of the Organ part, including a grand staff with treble and bass clefs. It features a dynamic marking of *p* (piano) and a *Sw.* (Swell) marking. The organ part includes chords and moving lines in both hands.

8

mf

Choir

Musical notation for the first system of the Choir part, featuring a treble clef, a key signature of two sharps, and a 3/4 time signature. The melody consists of quarter and eighth notes.

and peace to his peo - ple on earth.

mf

Musical notation for the third system of the Organ part, including a grand staff with treble and bass clefs. It features a dynamic marking of *mf* (mezzo-forte) and a *Sw.* (Swell) marking. The organ part includes chords and moving lines in both hands.

Man.

Copyright © 2006 by Paraclete Press, Orleans, MA 02653.
All rights reserved.

12

Choir

— Lord God, heav'n - ly King, al - might-y God and—

16

Choir

Fa - ther, — we wor - ship you, — we

20

Choir

give — you thanks, — we praise you for your glo -

Choir

Cong.

Cong.

Choir

Cong.

Choir

Christ, on-ly Son of the Fa-ther, Lord God, Lamb of

Choir

God, you take a-way the sin of the world: have mer-cy on-

Choir

us; you are seat - ed at the right hand of the

50 *mf*

Choir Fa - ther: re - ceive our prayer.

mf

(add)

54

Cong. Glo - ry, glo - ry to God in the
Glo - ria, glo - ria a Dios en el

Gt. *f*

59 *mf*

Choir For you a - lone are the

mf

Cong. high - est.
cie - lo.

Sw. *mf*

Man.

64

Choir

Ho - ly One, you a - lone are the Lord, you a -

f

f

69

Choir

- lone are the Most High,

Pedal

73

Choir

Je - sus, Christ, with the Ho - ly Spi - rit, in the

77

Choir

glo - ry of God the Fa - ther. A - men.

(add)

81

Desc.

optional descant

Glo - ry, glo -

Cong.

Glo - ry, glo - ry to
Glo - ria, glo - ria a

Gt. *ff*

86

Desc.

ry in the high - est.

Cong.

God in the high - est.
Dios en el cie - lo.

Sanctus and Benedictus

Craig Phillips

Moderato, joyfully (♩ = c. 96)

Congregation

Ho - ly, ho - ly, ho - ly

mf *f*

Pedal

Cong.

6

Lord, God of pow - er and might,

mf

Cong.

11

heaven and earth are full of your glo - ry. Ho -
Ho -

mf

Copyright © 2006 by Paraclete Press, Orleans, MA 02653.
All rights reserved.

16

Cong.

- san - na in the high - est. Blessed is the
 - san - na en el cie - lo.

ff f

21

Desc. optional descant

Ho - - -

Cong.

One who comes in the name of the Lord.

25

Desc.

- san - na, ho - san - na in the high - est.

Cong.

Ho - san - na in the high - est.
 Ho - san - na en el cie - lo.

ff p

Christ our Passover

Craig Phillips

Moderato (♩ = c. 76)

Congregation

Al - le - lu - ia, Al - le -

Organ

mp *mf*

Pedal

Cong.

- lu - ia, Al - le - lu - ia.

7 *mp* *mp*

Christ our Pass - o - ver is sac - ri - ficed

Copyright © 2006 by Paraclete Press, Orleans, MA 02653.
All rights reserved.

Choir *mf* for us; there - fore let us keep the

optional descant

Desc. Al - le - lu - ia, Al - le -

Choir feast.

Cong. Al - le - lu - ia, Al - lu -

Desc. - lu - ia, Al - le - lu - ia.

Cong. - lu - ia, Al - le - lu - ia.

Agnus Dei

Craig Phillips

Moderato (♩ = c. 72)

Congregation

Lamb of God, you take a-way the

p *mp*

Manuals

4 Cong.

sins of the world: have mer - cy on

mf

7 Cong.

us. Lamb of God, you take a-way the

Pedal

Manuals

Copyright © 2006 by Paraclete Press, Orleans, MA 02653.
All rights reserved.

10

Cong. sins of the world: have mer - cy on

mf

13

Cong. us. Lamb of God, you take a - way the

mf

Pedal

16

Cong. sins of the world: grant us

19

Desc. optional descant

Cong. Rall. grant us peace.

Cong. peace, grant us Rall. peace.

mp

Christ Our Passover

Organ Congregation

Al - le - lu - ia, al - le -
lu - ia, al - le - - - lu - - - ia.

The Choir sings the verse "Christ our Passover is sacrificed for us" after which all repeat the refrain.

Agnus Dei

Organ Congregation

Lamb of God, you take a-way the sins of the world: have
mer - cy on us. Lamb of God, you take a-way the sins of the
world: have mer - cy on us. Lamb of God, you take a-way the
sins of the world: grant _____ us peace, grant _____ us peace. _____

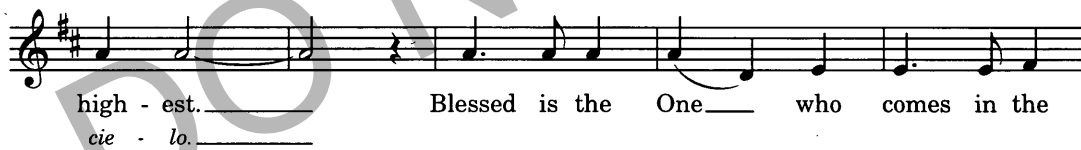
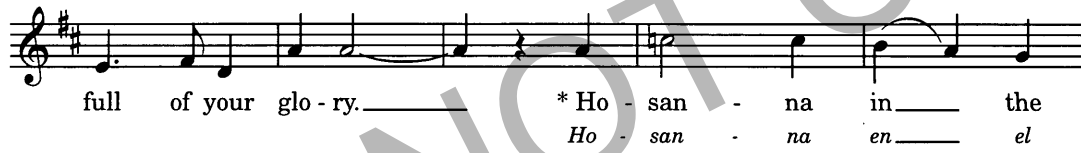
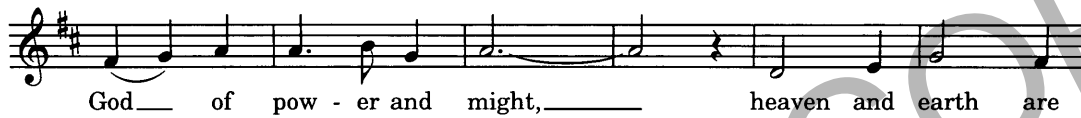
Copyright © 2006 by Paraclete Press, Orleans, MA 02653.
All rights reserved.

THIS PAGE ONLY MAY BE PHOTOCOPIED FOR CONGREGATIONAL USE
All reproductions must include copyright notice.

Sanctus and Benedictus

Organ

Congregation



* The "Hosanna" may be sung in English or Spanish

Copyright © 2006 by Paraclete Press, Orleans, MA 02653.

All rights reserved.

THIS PAGE ONLY MAY BE PHOTOCOPIED FOR CONGREGATIONAL USE

All reproductions must include copyright notice.

Festival Eucharist

Kyrie

Craig Phillips

Congregation

Lord, have mer - cy. Christ, have
mer - cy. Lord, _____ have ___ mer - cy.

The Choir then sings the ancient text "Kyrie eleison. Christe eleison. Kyrie eleison," after which all repeat the refrain.

Gloria in excelsis

May be sung in English or Spanish

Glo - - - - - ry. glo - - - -
Glo - - - - - ria, glo - - - -
- - ry to God in the high - - - - - est.
- - ria a Dios en el cie - - - - - lo.

Choir: and peace to his people on earth. Lord God,
heavenly King, almighty God and Father, we worship you,
we give you thanks, we praise you for your glory. [**Congreg. Refrain**]

Choir: Lord Jesus Christ, only Son of the Father, Lord God, Lamb of God,
you take away the sin of the world: have mercy on us;
you are seated at the right hand of the Father: receive our prayer. [**Congreg. Refrain**]

Choir: For you alone are the Holy One, you alone are the Lord, you alone are the Most High,
Jesus, Christ, with the Holy Spirit, in the glory of God the Father. Amen. [**Congreg. Refrain**]

Copyright © 2006 by Paraclete Press, Orleans, MA 02653.
All rights reserved.

THIS PAGE ONLY MAY BE PHOTOCOPIED FOR CONGREGATIONAL USE
All reproductions must include copyright notice.