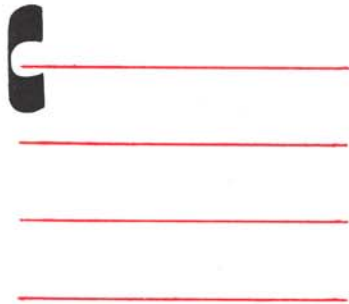


# THE GREGORIAN HIGHWAY CODE



FOUR-LINE STAVE



DOH CLEF — on any line  
but ALWAYS DOH



FAH CLEF — on 2nd or 3rd line  
but ALWAYS FAH

# NOTES

SINGLE NOTE – ONE NOTE FOR ONE SYLLABLE



TWO NOTES FOR ONE SYLLABLE



HIGH - LOW



LOW - HIGH

THREE NOTES FOR ONE SYLLABLE



LOW - HIGH - LOW



HIGH - LOW - HIGH

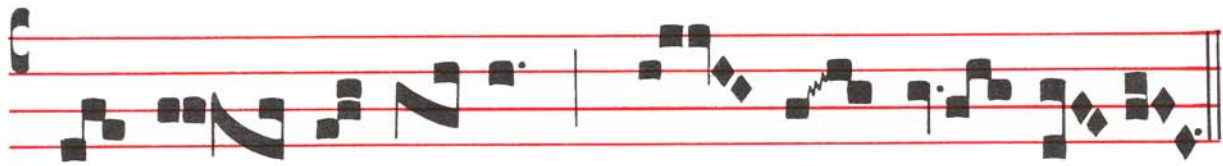


HIGH - LOW - LOWER



LOW - HIGH - HIGHER

add notes on to make longer runs on ONE SYLLABLE:



T Er - ra \* tré - mu - it, et qui - é - vit,



SLIGHTLY LENGTHEN



DOUBLE LENGTH

## HUMMING NOTES ("LIQUESCENTS")



becomes



when you HUM  
the 2nd note



becomes



when you HUM  
the 2nd note

---

## QUESTION MARK ("QUILISMA")



LOW - HIGH - HIGHER

bottom note slightly LENGTHENED

---

## PHRASES — PUNCTUATION



QUARTER BAR — COMMA

HALF BAR — SEMICOLON

WHOLE BAR — FULL STOP

DOUBLE BAR — END