

For Mindy and Rachel

# Hymn of the Cherubim

SATB, Cantor (Deacon / Priest) and Organ

**Larghetto** ♩ = 62 - 68 (♩ = ♩ throughout) Dean Huff

*p*

Soprano  
Alto  
Tenor  
Bass

Let us, who my-sti-cally re-pre-sent the Cher - u -

Sw.:Viole, Viole Céleste 8'

*p*

Sw.

Sw. - Ped.  
Violone 16' or Lieblich 16'  
Contre Bourdon 32'

6

- bim, *p*

Let us, who my-sti-cally re-pre-sent the

*p*

Let us, who my-sti-cally re-pre-sent the

*p*

Let us, who my-sti-cally re-pre-sent the

6

Ch: Fonds 8'

Ch.

*p*

Ped. - 32'

Copyright © 1992 by Paraclete Press, Orleans, MA 02653.  
All rights reserved.

10 *mp* 3

and sing the thrice - ho - ly

Cher - u - bim,

Cher - u - bim,

Cher - u - bim,

10 Sw.

Sw.

+ 32'

15

hymn to the life - cre - a - ting Tri - ni - ty,

and

and

and

*p*

*p*

*p*

15

and

Ch.

Ch.

- 32'

19

sing the thrice - ho - ly hymn to the life - cre - a - ting  
 sing the thrice - ho - ly hymn to the life - cre - a - ting  
 sing the thrice - ho - ly hymn to the life - cre - a - ting

19

23

*mp* now lay a side all —  
*mf* Tri - ni - ty,  
*mf* Tri - ni - ty,  
*mf* Tri - ni - ty,

23

*mf* *mp* Sw.  
 Sw.

+ 32'

28

world - ly cares.

*mp*

now lay\_\_ a - side all\_\_ world - ly

28

33

**A** *p*

Let us, who mys -

*p*

cares. Let us, who mys -

*p*

Let us, who mys - - ti - cally re - pre -

*p*

Let us, who mys - - ti - cally re - pre -

33

(Sw.: - Célèste, + Bourdon, Geigen 8')

Ch.

36

ti - cally re - pre - sent the Cher - u - bim,

ti - cally re - pre - sent the Cher - u - bim,

sent the Cher - u - bim, and sing the

sent the Cher - u - bim, and sing the

+ Sw. - Ch.

Ped.

40

and sing the thrice - ho - ly hymn to the life - cre - a - ting

and sing the thrice - ho - ly hymn to the life - cre - a - ting

thrice - ho - ly hymn to the life - cre - a - ting Tri - ni - ty

thrice - ho - ly hymn to the life - cre - a - ting Tri - ni - ty

44 *mf* Tri - ni - ty, to the life - cre -

*mf* Tri - ni - ty, to the life - cre -

*mf* to the life - cre - a - ting,

*mf* to the life - cre - a - ting,

44 *Gt.*

+ Sw. - Gt.  
+ Ch. - Gt.

*Gt.*

+ Gt. - Ped.  
+ Ch. - Ped.

*Ped.*

47 - a - ting Tri - ni - ty, the life - cre - a - ting

- a - ting Tri - ni - ty, the life - cre - a - ting

life - cre - a - ting Tri - ni - ty, the life - cre - a - ting

life - cre - a - ting Tri - ni - ty, the life - cre - a - ting

47

51 *ff*

Tri - ni - ty,

*ff*

Tri - ni - ty,

*ff*

Tri - ni - ty,

*ff*

Tri - ni - ty,

51 *ff* *fff* *Marcato*

*Legato*

54 **B**

now

*p*

now lay a - side all

now

*p*

now lay a - side all

54

' Ch. w/ Sw. coupled - Sw. - Ch.

*ff* *p*

Ch. Ped. #

- Gt. - Ped. - Ch. - Ped.

58

lay a - side all world - ly cares.  
world - ly cares, now

lay a - side all world - ly cares.  
world - ly cares, now

*p*

58

Sw. Viole, Viole Céleste 8'  
Sw.

62

lay a - side all world - ly cares.

*pp* ^

lay a - side all world - ly cares.

*pp* ^

62

lay a - side all world - ly cares.

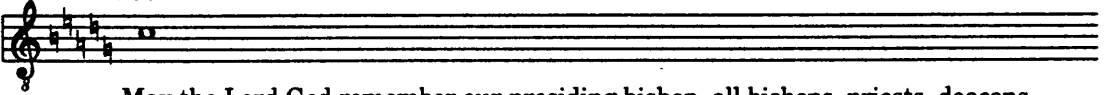
*pp* ^

+ 32' Contre bourdon

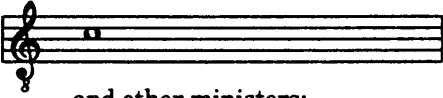


C

67 Deacon



May the Lord God remember our presiding bishop, all bishops, priests, deacons,



and other ministers;

68 Priest



May the Lord God remember all of you Christians in His Kingdom always, now and ever



and unto a - ges of ages.

D

69 Andante ♩ = 78

Molto allegro ♩ = 148 - 162

*mp* *mf* *ff* *f*

A - men, a - men, a - men. That we may ex - alt the King of

*mp* *mf* *ff* *f*

A - men, a - men, a - men. That we may ex - alt the King of

*mp* *mf* *ff* *f*

A - men, a - men, a - men. That we may ex - alt the King of

*mp* *mf* *ff* *f*

A - men, a - men, a - men. That we may ex - alt the King of

69

Gt.

*f*

Gt.

74

All, that we may ex- alt the King of All,

All, that we may ex- alt the King of All,

All, that we may ex- alt the King of All, on

All, that we may ex- alt the King of All, on

(Prin. 8, 4' 2, III)

74 Sw. (Reeds 8, 4')

Sw. - Sw. Reeds + Sw. - Gt.

Gt.

Gt.

+ Sw. - Ped.

77

ranked, un- seen an- gel - ic hosts borne up in maj - es - ty,

ranked, un- seen an- gel - ic hosts borne up in maj - es - ty,

77

Man.

Sw. + Sw. Reeds 8' Sw.

Ped.

80

ranked, un-seen an-gel - ic hosts borne up in maj - es - ty, on

ranked, un-seen an-gel - ic hosts borne up in maj - es - ty, on

on

on

80

Man. *f* Gt. Gt.

Ped. + Gt. Reeds

83

ranked, un - seen an-gel - ic hosts borne up in maj - es-ty. — *ff*

ranked, un - seen an-gel - ic hosts borne up in maj - es-ty. — *ff*

ranked, un - seen an-gel - ic hosts borne up in maj - es-ty. — *ff*

ranked, un - seen an-gel - ic hosts borne up in maj - es-ty. — *ff*

83

Man. + Ped. Reeds 16', 8' *ff*

Ped.

85 *(ff)*  
 Al - le - lu - ia, al - le - lu - ia, al - le -  
*(ff)*  
 Al - le - lu - ia, al - le - lu - ia, al - le -  
*(ff)*  
 Al - le - lu - ia, al - le - lu - ia, al - le -  
*(ff)*  
 Al - le - lu - ia, al - le - lu - ia, al - le -

85  
 Sw. + Reed 16' Add Add  
 + Ped. Contre Bourdon 32'

88 *fff*  
 - lu - ia, al - le - lu - ia.  
*fff*  
 - lu - ia, al - le - lu - ia.  
*fff*  
 - lu - ia, al - le - lu - ia.  
*fff*  
 - lu - ia, al - le - lu - ia.

88 Add Marcato *fff* En chamade rit.  
 Legato