

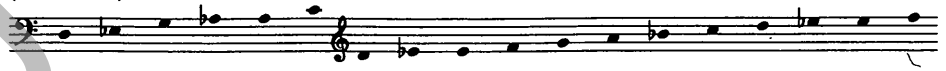
For the Boys' and Girls' Choir
Emmanuel Parish, Mercer Island, Washington
Dr. Robert L. Poovey, Music Director

Drop, Drop, Slow Tears

Two Part Voices and Handbells

(3 Octaves)

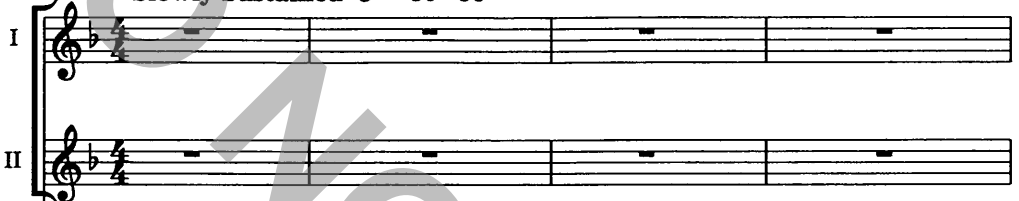
Bells
Used



Phineas Fletcher, 1633

Sam Batt Owens

Slowly Sustained ♩ = 50 - 56



Handbells *



5 *p* Drop, — drop, slow tears, *mf* Drop, — drop, And

mp Drop, — drop, slow tears, *mf* Drop, — drop, slow tears, And

5



* or Keyboard

Copyright © 1995 by Paraclete Press, Orleans, MA 02653.
All rights reserved.

9
 bathe those beau - teous feet, Which brought from Heav'n The news and
 bathe those beau - teous feet, Which brought from Heav'n The news and

12
mp *p* *pp* *mf*
 Prince of Peace. Cease not, wet
 Prince of Peace, Peace. Cease not, wet

12 *pp* *mp* *p* *mp* *p* *mp*

18 *f* *sf*
 eyes, His mer - cies to en - treat; To cry for ven - geance, To cry for
 eyes, His mer - cies to en - treat; To cry for ven - geance, To cry for

18 *f* *sf*
 More urgently

LV

22 *sf* *p* Slowing Long In time
 ven-geance Sin doth nev-er cease.
sf *p* Long
 ven-geance Sin doth nev-er cease.

22 Slowing In time *mp*
mf *mp* *p*
p

27 *mf* Sustain
 In — your deep floods,
mf Sustain *mp*
 In — your deep floods, In — your deep

27 *p*
p

32 *mp*, *mf* = *f*
 In your deep floods, Drown all my faults and fears; Nor let His
mf = *f*
 floods Drown all my faults and fears; Nor let His

32

35 *mp* *p* *pp*

eye See sin, but through my tears.

eye See sin, but through my tears, tears.

This system contains two vocal staves and a piano accompaniment. The vocal staves start at measure 35. The first vocal staff has lyrics 'eye See sin, but through my tears.' with dynamics *mp*, *p*, and *pp*. The second vocal staff has lyrics 'eye See sin, but through my tears, tears.' with the same dynamics. The piano accompaniment is in the bass clef and consists of a steady eighth-note accompaniment.

39 **Gradually slowing** *p*

Drop, drop, slow

Drop, drop, slow tears,

39 *p* **Gradually slowing**

This system contains two vocal staves and a piano accompaniment. The vocal staves start at measure 39. The first vocal staff has lyrics 'Drop, drop, slow' with a *p* dynamic and a 'Gradually slowing' instruction. The second vocal staff has lyrics 'Drop, drop, slow tears,' with a *p* dynamic. The piano accompaniment is in the bass clef and features a steady eighth-note accompaniment with a *p* dynamic and a 'Gradually slowing' instruction.

43

tears, Drop, drop, slow tears.

Drop, drop, slow tears.

43

This system contains two vocal staves and a piano accompaniment. The vocal staves start at measure 43. The first vocal staff has lyrics 'tears, Drop, drop, slow tears.' with a *p* dynamic. The second vocal staff has lyrics 'Drop, drop, slow tears.' with a *p* dynamic. The piano accompaniment is in the bass clef and features a steady eighth-note accompaniment.